

SCAFF NET STANDARD

- **FABRIC**

- **Type** HDPE knitted monofilament
- **Fabric weight** 50 g/m²
- **Tensile strength** 210 N/5 cm
- **Tear resistance** 45 N
- **Temperature resistance** -40/+80 °C
- **Wind-force coefficient** Perpendicular C_f 0,46
Parallel C_f 0,15

- **EXECUTION**

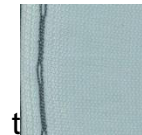
- **Size** Finished size, +/- 2%
- **Finishing** Knitted eyelets in black
- **Eyelet interval** 5 cm
- **Tear resistance buttonholes** 180 N

- **SIZEPACKAGINGPALLET**

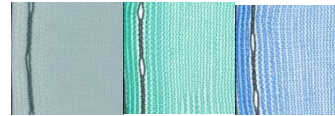
- **2,07 x 50 m** 1 pcs/roll 60 pcs/pallet



- **2,07 x 100 m** 1 pcs/roll 28 pcs/palle



- **2,57 x 10 m** 1 pcs/roll 144 pcs/pallet



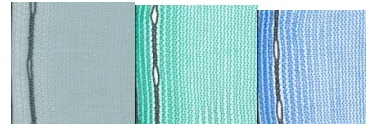
- **2,57 x 20 m** 4 pcs/roll 72 pcs/pallet



- **2,57 x 50 m** 1 pcs/roll 60 pcs/pallet



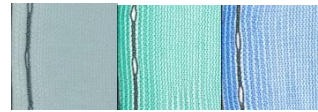
- **2,57 x 100 m** 1 pcs/roll 28 pcs/pallet



- **3 x 50 m** 1 pcs/roll 60 pcs/pallet



- **3,07 x 10 m** 1 pcs/roll 120 pcs/pallet



- **3,07 x 20 m** 1 pcs/roll 60 pcs/pallet



- **3,07 x 50 m** 1 pcs/roll 60 pcs/pallet



- **3,07 x 100 m** 1 pcs/roll 28 pcs/pallet

